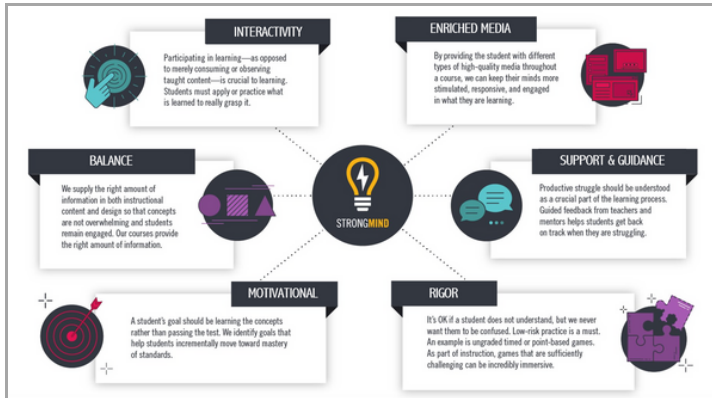




High-Quality, Flexible Digital Courses for K-12



Equity for Diverse Learners

StrongMind is committed to providing a flexible and accessible learning experience for all users, with content to support personalized learning and the needs of diverse learners. Our K-12 digital courses are designed with the principles of Backward Design and Universal Design for Learning (UDL), ensuring that our content aligns with educational standards and incorporates essential supports, allowing all students to maximize their learning potential.

Multiple Opportunities to Practice and Demonstrate Learning

Our K-12 courses provide a variety of ways for students to show what they know and can do, including formative and summative assessments ranging from no-stakes practice to high-stakes measures of mastery. Teachers gain deep insight into individual and class performance, while students gain confidence as they deepen understanding. Assessment opportunities include:

- A variety of computer-scored items with targeted and immediate feedback
- Constructed response and other writing activities
- Discussion board responses, including collaboration with their peers
- Projects, with varying complexity that include comprehensive, engaging, and contextually relevant project-based learning (PBL) experiences

DISCOVER THE STRONGMIND DIFFERENCE

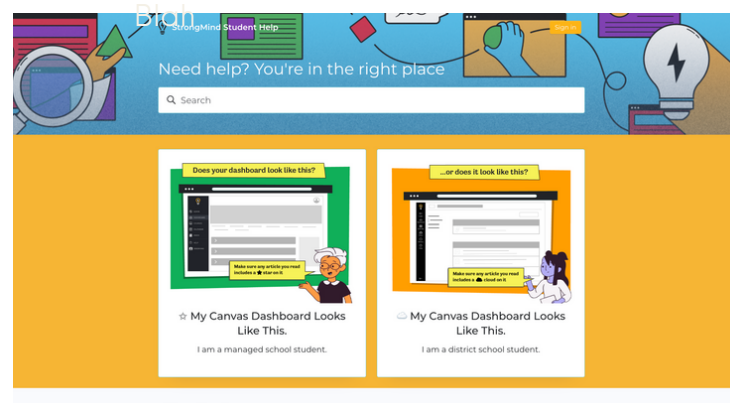
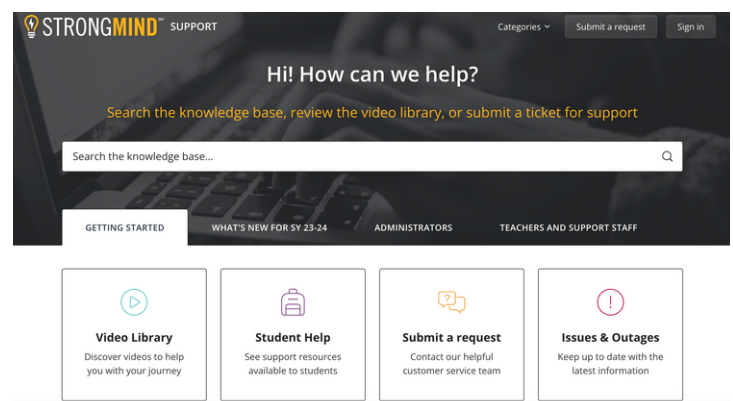
24/7 Access to On-Demand Training Resources

success.strongmind.com

Teachers and administrators leveraging StrongMind content have access to our dynamic Support Site for round the clock assistance. Search by role to access how-to articles, informative video tutorials, webinars and newsletters.

studenthelp.strongmind.com

Students now have their own site to support them as they learn to navigate StrongMind courses in their LMS. They can browse by topic, view FAQs, and access relevant resources set them up for success.



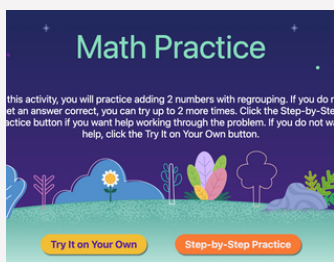
Digital Courses that Empower K-12 Students

Engaging



Courses include rich media and interactives, such as videos, infographics, and relevant images. K-2 ELA courses were developed using The Science of Reading and include natural voice instruction and authentic opportunities to support mastery.

Research-Based



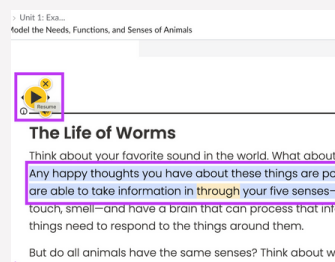
Based in modern learning science with a blend of digital and collaborative learning. Scaffolds are embedded to provide equity and support for all learners, and lessons create engagement through immersive technology.

Flexible



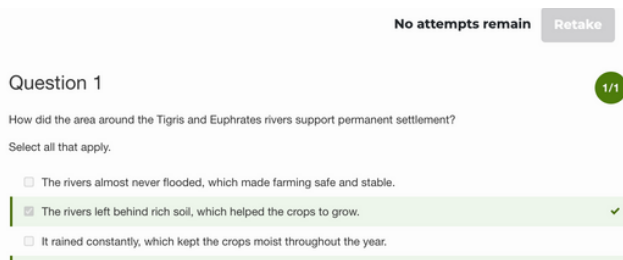
Developed specifically for hybrid, blended, and virtual learning. Our curriculum is customizable to be tailored for your district and school goals, and is future-proof with a path forward as your district or school evolves.

Accessible



Multiple supports are embedded, including text-to-speech read-aloud, key terms, translations, closed captions and transcripts, explanations for complex images, dictionary support, and immediate feedback.

Real Time Access to Data



StrongMind equips K-12 students with personalized and timely feedback throughout each course, empowering learners to monitor their own progress as they work towards and achieve mastery. Students also receive different types of feedback, such as:

- Dynamic and targeted feedback for computer-scored items
- Student-facing rubrics to guide understanding
- Detailed feedback from teachers on teacher-scored activities
- Student-facing progress, achievement, and grade data

Content Your Way



- Full Alignment to Pennsylvania State Standards
- Customizable content tools provide personalized pathways for learning including
 - Custom placement
 - Sequence control
 - Speedgrader
- Instruction from your local teachers, our highly qualified, PA certified teachers, or a combination of both
- Flexible and personalized Social Emotional Learning solution for grades K-12

Robust Teacher Supports

Teachers should have rich resources for teaching digital courses, just like the resources that are available with traditional, print-based textbooks. StrongMind courses include a Teacher Resource Guide (TRG) with robust tools that support a blend of both personalized, self-paced learning and synchronous learning in a variety of learning models.

- General Course Resources — includes detailed overview(s), course objectives, materials lists, graphic organizer library, and more
- Course Activity-Specific Resources — includes activity specific lesson plans and grading/scoring guidelines for teacher-directed and off-line independent activities that align with course activities
- Project-Based Learning — designed for students to think critically, applying skills and concepts to real-world problems and demonstrating understanding of complex course content not adequately measured through traditional assessments
- Monthly Training Opportunities
- Access to 24/7 Support Site to on-demand training resources