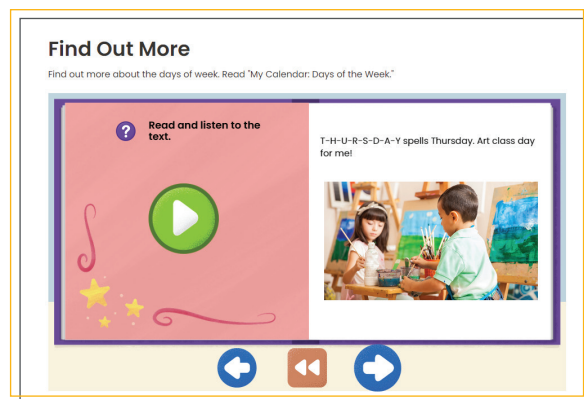


Student Success is What We Do — LET'S INNOVATE TOGETHER

Based on 20 years of experience with students around the country, our courses offer:

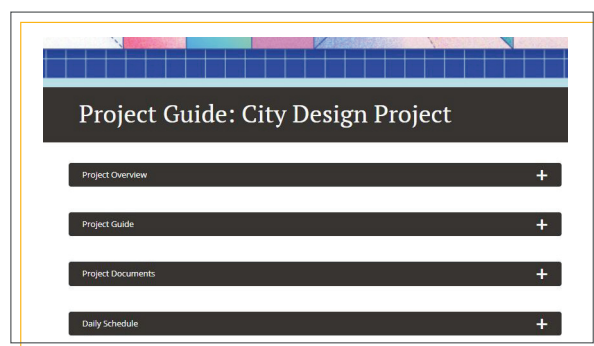
Empowerment through flexibility

- Developed specifically for hybrid, blended, and virtual learning
- Customizable to be tailored for your district and school goals
- Future proof with a path forward as your district or school evolves



Research-based pedagogy for increased student outcomes

- Based in modern learning science with a blend of digital and collaborative learning
- Scaffolds to provide equity and support for all learners
- Engagement through immersive technology

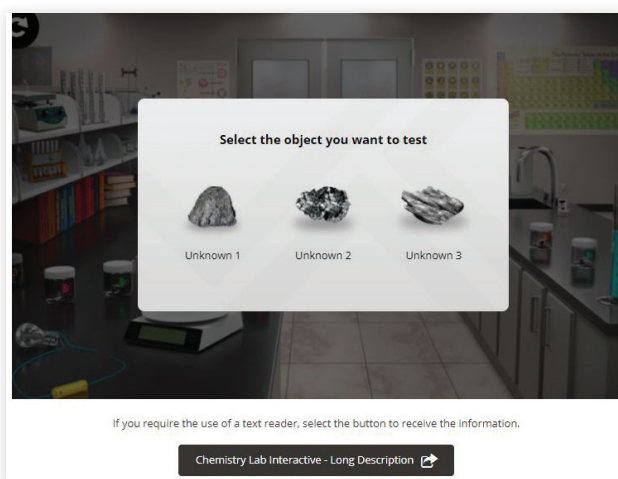


Robust resources to foster thriving teachers

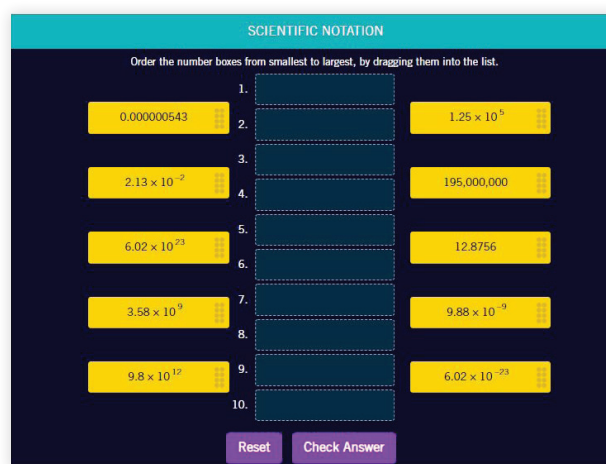
- Real-time insights to personalize learning and guide data-driven instructional decisions
- Lesson plans for teacher-led instruction, remediation, and application with project-based learning
- Tools to create their own, original content

K-12 Curriculum that Comes to Life

Our Digital Promise-certified and standards-aligned content for mathematics, English language arts, science, social studies, and a wide variety of electives, maximizes time place, people, content, instruction, and assessment to drive positive learning outcomes.



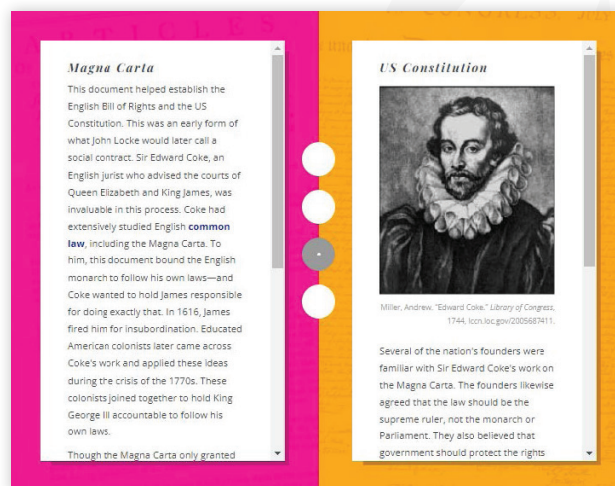
Chemistry Lab, Science 8



Scientific Notation Interactive, Math 8

Designed specifically for hybrid, blended, and virtual learning, our courses:

- Engage students with rich media, comics, interactives, infographics, and more
- Multiple opportunities to practice and demonstrate mastery
- Reinforce key concepts and objectives with offline activities and printables
- Authentic project-based learning provides application of knowledge, critical thinking, and collaboration



Comparing the Magna Carta and Constitution, US Government



STRONGMINDSM COURSES AND CURRICULUM FOR K-12

Equity for Diverse Learners

StrongMind is committed to providing a flexible and accessible learning experience for all users, with content that supports the needs of diverse learners. Our digital courses and curriculum use [Backward Design](#) and [Universal Design for Learning](#), and include numerous scaffolds and supports.

On-page text can be read aloud via ReadSpeaker where the "Listen" button appears

Highlighted key vocabulary, with ability to click for definitions

Annotations, marking key concepts, terms, and other relevant information

Select text can be highlighted and translated into up to 18 languages

Students can highlight text and access a digital dictionary

Videos come with closed captions and transcripts

Each course includes real and/or illustrated images

Engaging videos throughout each course

Sonnet 18
By William Shakespeare

Shall I compare thee to a summer's day?
Thou art more lovely and more temperate:
Rough winds do shake the darling buds of May,
And summer's lease hath all too short a date:
Sometime too hot the eye of heaven shines,
And often is his gold complexion dimmed,
And every fair from fair sometime declines,
By chance, or nature's changing course untrimmed;
But thy eternal summer shall not fade,
Nor lose possession of that fair thou ow'st,
Nor shall death brag thou wander'st in his shade,
When in eternal lines to time thou grow'st,
So long as men can breathe or eyes can see,
So long lives this, and this gives life to thee.

Thou art more lovely and more temperate.

Try It Yourself

Write an objective summary of the following paragraph from Chapter 2 of *The Story of My Life*. Remember to include only key details from the paragraph, to use your own words, and to leave out personal opinions or judgments.

At that time I had a much-petted, much-abused doll, which I afterward named Nancy. She was, alas, the helpless victim of my outbursts of temper and of affection, so that she became much the worse for wear. I had dolls which talked, and cried, and opened and shut their eyes; yet I never loved one of them as I loved poor Nancy. She had a cradle, and I often spent an hour or more rocking her. I guarded both doll and cradle with the most jealous care; but once I discovered my little sister sleeping peacefully in the cradle. At this presumption on the part of one to whom as yet no tie of love bound me I grew angry. I rushed upon the cradle and over-turned it, and the baby might have been killed had my mother not caught her as she fell. Thus it is that when we walk in the valley of twofold solitude we know little of the tender affections that grow out of endearing words and actions and companionship. But afterward, when I was restored to my human heritage, Mildred and I grew into each other's hearts, so that we were content to go hand-in-hand wherever caprice led us, although she could not understand my finger language, nor I her childish prattle.

Try Again Submit

Multiple opportunities to practice and demonstrate learning

Courses provide a variety of ways for students to show what they know and can do, including formative and summative assessments ranging from no-stakes practice to high-stakes measures of mastery. Teachers gain deep insight into individual and class performance, while students gain confidence and build agency. Assessment opportunities include:

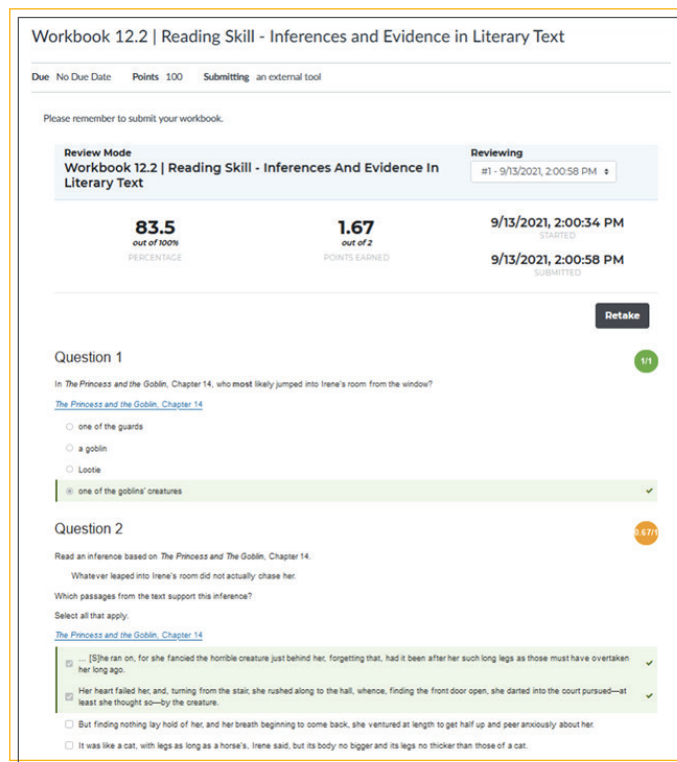
- Variety of computer-scored items with targeted and immediate feedback
- Constructed response and other writing activities
- Discussion board responses, including responding to their peers
- Projects, including short projects and complete, immersive project-based learning (PBL)



Learners build agency with real-time access to their own data

StrongMind equips K-12 students with personalized and timely feedback throughout each course, empowering learners to monitor their own progress as they work towards and achieve mastery. Students also receive different types of feedback, such as:

- Dynamic and targeted feedback for computer-scored items
- Student-facing rubrics to guide understanding
- Detailed feedback from teachers on teacher-scored activities
- Student-facing progress, achievement, and grade data



The screenshot displays a student's progress in a 'Workbook 12.2 | Reading Skill - Inferences and Evidence in Literary Text'. At the top, it shows 'Due: No Due Date', 'Points: 100', and 'Submitting: an external tool'. Below this, a 'Review Mode' section indicates 'Workbook 12.2 | Reading Skill - Inferences And Evidence In Literary Text' with a 'Reviewing' status and a timestamp of '9/13/2021, 2:00:58 PM'. The student's score is '83.5 out of 100%' (PERCENTAGE) and '1.67 out of 2' (POINTS EARNED). The start time is '9/13/2021, 2:00:34 PM' and the submit time is '9/13/2021, 2:00:58 PM'. A 'Retake' button is visible. The interface shows two questions. Question 1 asks 'In The Princess and the Goblin, Chapter 14, who most likely jumped into Irene's room from the window?' with options: 'one of the guards', 'a goblin', and 'Lootie'. The correct answer is 'one of the goblins' creatures. Question 2 asks 'Read an inference based on The Princess and The Goblin, Chapter 14. Whatever leaped into Irene's room did not actually chase her. Which passages from the text support this inference? Select all that apply.' The correct answers are: '[S]he ran on, for she fancied the horrible creature just behind her, forgetting that, had it been after her such long legs as those must have overtaken her long ago.', 'Her heart failed her and, turning from the stair, she rushed along to the hall, whence, finding the front door open, she darted into the court pursued—at least she thought so—by the creature.', and 'But finding nothing lay hold of her, and her breath beginning to come back, she ventured at length to get half up and peer anxiously about her.'

Thrive with StrongMind digital courses and curriculum for hybrid, blended, and virtual learning

In addition to innovative digital courses and curriculum, StrongMind offers a range of tailored solutions and services to support schools and districts, including [StrongMinded](#), a flexible and personalized Social Emotional Learning solution for grades K-12, community engagement services, and professional development services. Learn more about our forward-thinking solutions and reach out to discuss today!