

# WHAT IS A HYBRID SCHOOL?



A hybrid school is conceptually simple: it combines online instruction with onsite, face-to-face interaction. But that simplicity masks a powerful concept: a hybrid school flips the script of a traditional education by:

- freeing students and teachers from constraints of time and space,
- allowing teachers to focus on relationships with students, and
- encouraging students to envision and pursue their interests, linking academics to careers, jobs, internships, sports, arts—or whatever captivates each student.

Imagine a school built on these five core principles, each of which is explored in more detail on the following pages.



## SPACE

A physical school building combined with students learning from home, libraries, coffee shops, etc.



## TIME

A combination of onsite and online, in almost any combination that's not 100% of either. Most hybrid schools are somewhere closer to the middle of the continuum, or have options for students to be along the middle of the continuum.



## CONTENT

Online content supports learning to free some teacher and staff time to focus on 1) harder concepts and 2) relationships. Content includes SEL and PBL components.



## TECHNOLOGY PLATFORM

Supports teacher understanding of student learning in a class, and “champions” understanding of a student’s academic standing across classes, as well as “life status.”



## RELATIONSHIPS

Hybrid schools prioritize relationships between students and adults, who serve as students’ champions, mentors, and supporters. These adults may be teachers, counselors, or have other titles.



# SPACE



**A hybrid school has a physical building, which may be repurposed or new. It may look like a traditional school, or like something very different.**

Hybrid schools often include large and small group instructional areas, informal collaboration spaces, and areas designated for science, art, or other specific topics or pursuits.

Valor Preparatory Academy in Arizona has the potential to enroll 250 students in a much smaller space than a traditional school would need because students split time between working at or away from school. Other hybrid schools also find that they can use a physical space that is considerably smaller than a typical school size for a given number of students.



*Flexible hybrid learning spaces of  
Valor Preparatory Academy of Arizona*

**HOW CAN**  
 **STRONGMIND<sup>SM</sup> HELP?**

We understand that your district may have a building in mind to use as-is, plans to refurbish a building or construct a new school- or no idea yet. We can help you start from any point and get to a viable building to house a hybrid school taking into account the size of the student population, scheduling expectations, and other issues.



**A hybrid school frees students and teachers from the constraints of time. Hybrid schools combine online learning with onsite instruction in a variety of configurations.**

Some require that all students come in on one or two specific days each week, for most of the day, with a set schedule to work with their teachers during the onsite days.

Hybrid schools' onsite requirements vary. Schools operating under California's independent study law are required to meet with students face-to-face for only one hour per week, but many students work at the school much more because they prefer the school's learning environment, or they enjoy interacting with other students. Still other hybrid schools set individual onsite requirements for each student based on the student's interests, needs, and academic standing.

When students aren't at school, they may learn from home, parents' workplaces, libraries, coffee shops, or other locations.

#### SAMPLE HYBRID SCHOOL SCHEDULE

	GRADES 6-8	GRADES 9-12
MONDAY	Project-Based Learning	Campus PM
TUESDAY	Campus AM	Campus PM
WEDNESDAY	Campus AM	Campus PM
THURSDAY	Campus AM	Campus PM
FRIDAY	Campus AM	Project-Based Learning

**HOW CAN**  
 **STRONGMIND<sup>SM</sup> HELP?**

We understand that different students and districts have varied desires and requirements related to the use of time. We can help you design a hybrid schedule based on your needs and building on our knowledge of examples from leading schools.

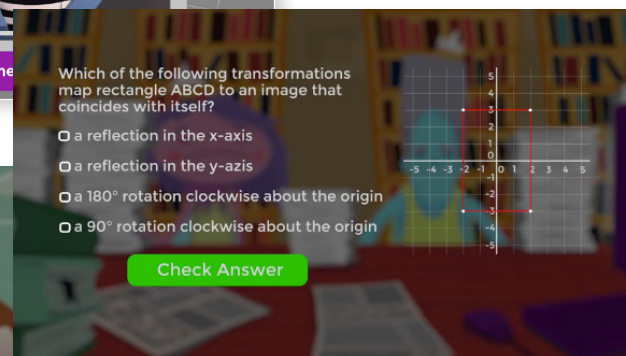
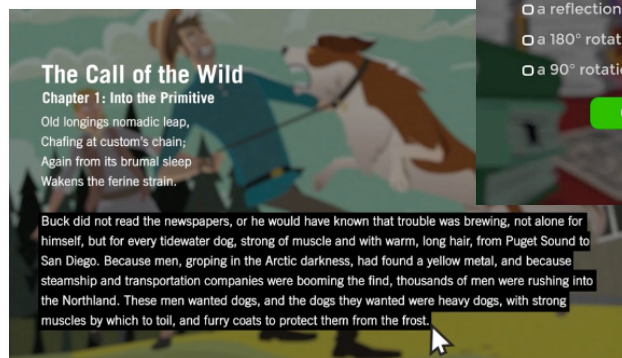
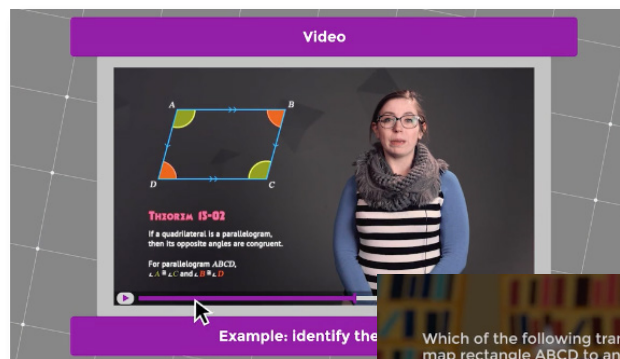


# DIGITAL CONTENT



Hybrid schools use digital content and in-person and online instruction to support student learning. Students enjoy the flexibility that technology provides, allowing them to benefit from both collaborative and independent work on-site and at home.

Teachers guide students using digital solutions for instruction and progress monitoring. Digital content also promotes student agency in when, where, and how students learn, while supporting engagement with interactive media and deeper learning opportunities.



## HOW CAN

 **STRONGMIND** SM **HELP?**

We are the only provider to offer courses specifically for hybrid school teachers. The StrongMind hybrid curriculum with virtual courses provides opportunities for teachers to work with students face to face. Our courses include pacing guides, teacher directed lesson plans, project-based learning, social-emotional learning, etiquette expectations, and more—all with a hybrid schedule in mind.

In addition, StrongMind curriculum offers real-time supports that enable remediation and acceleration of student learning. Our PlanetMATH supplement supports students in the content area that many struggle with the most.



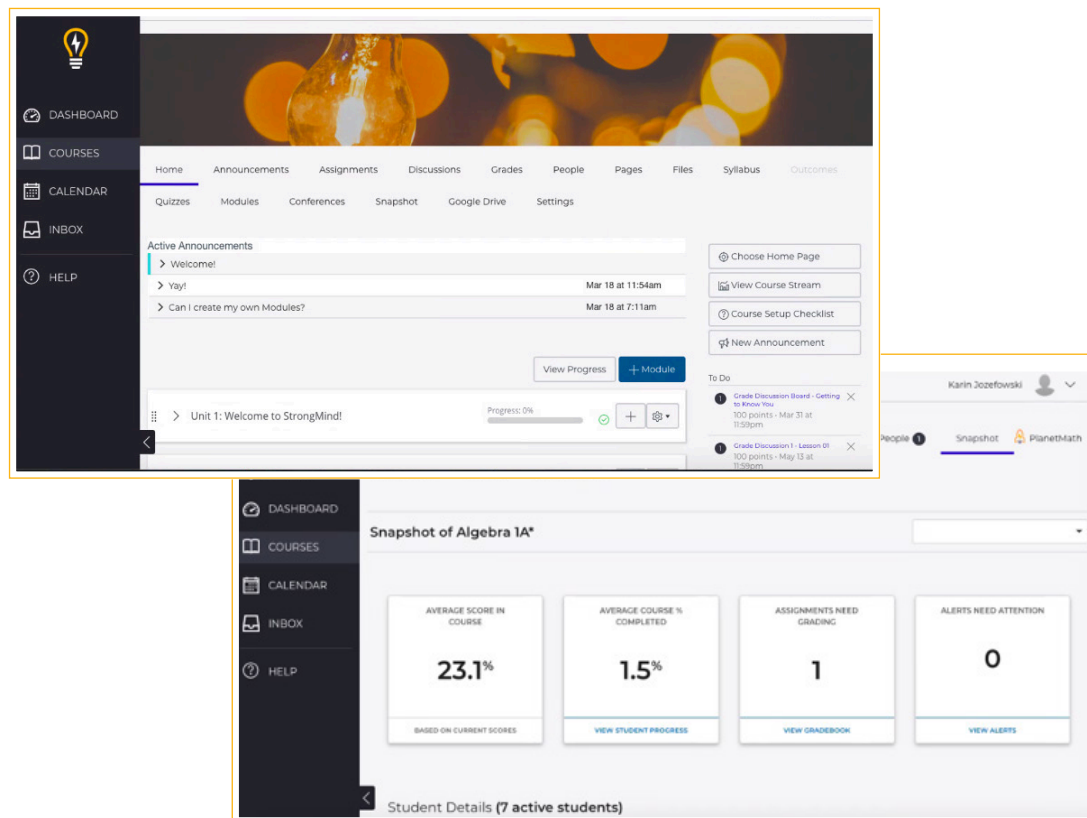
# TECHNOLOGY PLATFORM



The Learning Management System (LMS) and Student Information System (SIS) combine to provide the technology platform that underpins a hybrid school. The LMS houses course content, student communications, teacher resources, and related instructional materials. The SIS holds all student information and is tightly coordinated with the LMS. Together the systems provide views at the student-, course-, and school-level.

In a hybrid model, it is important to have tools that interact with each other to facilitate seamless communication and integration of information, minimize administrative burden, and maximize assistance to teachers so they can focus on student relationships and personalized instruction.

The technology platform enables visibility of student learning for work in and out of the classroom, providing teachers with real-time data to guide and target instruction.



## HOW CAN

 **STRONGMIND<sup>SM</sup>** HELP?

The LMS and SIS platforms are tightly integrated to ensure consistent communication and flow of information between students, teachers, and school leaders. Students see all of their online courses and digital content; teachers see gradebooks and student information for all of their students; administrators can view student achievement across the entire school.



# RELATIONSHIPS

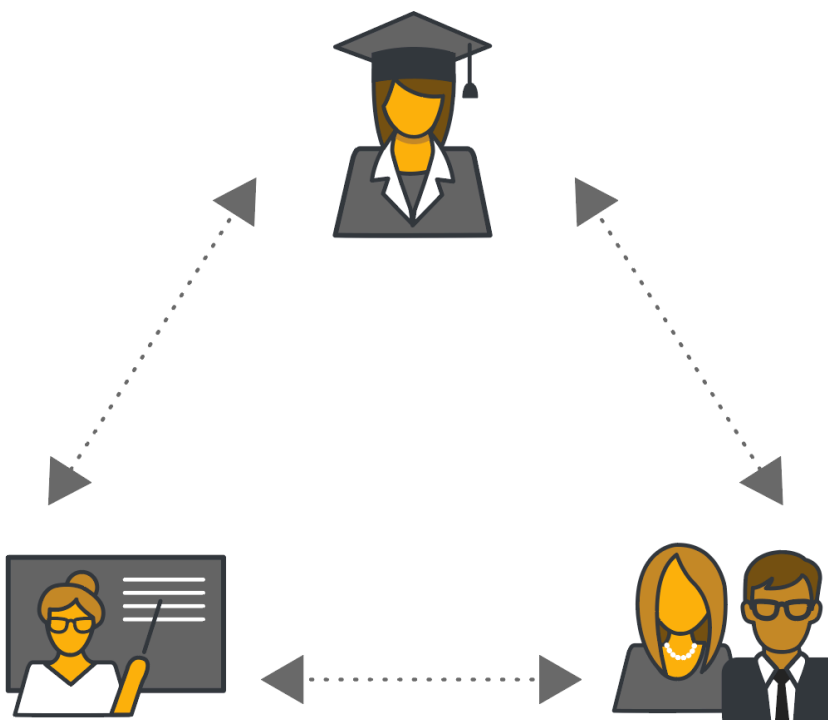


**We have interviewed many students about their experiences at hybrid schools, and the story we hear over and over is simple: “my teachers know me, and I know my teachers, so well at this school. That’s why I love coming here.”**

It may seem counter-intuitive that a school that appears to be based on technology is, in fact, prioritizing relationships. But that’s exactly what we find at hybrid schools.

Hybrid schools cultivate relationships in a couple of ways. First, teachers are freed from much of the time-consuming work that they have to do in a traditional school tied to classroom management, grading, taking attendance, and other mundane tasks. They can put their time and efforts into working directly with students one-on-one and in small groups.

Second, many hybrid schools ensure that each student has an adult in a mentor, facilitator, or “champion” role. The adult may be a teacher, school administrator, or in another role at the school. He or she often becomes the student’s advocate, helping the student understand and reach for her goals—academic or otherwise—while navigating challenges from health, family, or other issues.



## HOW CAN

 **STRONGMIND<sup>SM</sup> HELP?**

We have interviewed people in mentor/champion roles in hybrid schools and understand how they work with students and the varied approaches they take. Each school approaches the mentor role a bit differently, and yours likely will as well. We can help you understand the importance of mentors to overall student and school goals, and help mentors learn how to play this vital role for students.