



 **STRONGMIND**<sup>SM</sup>

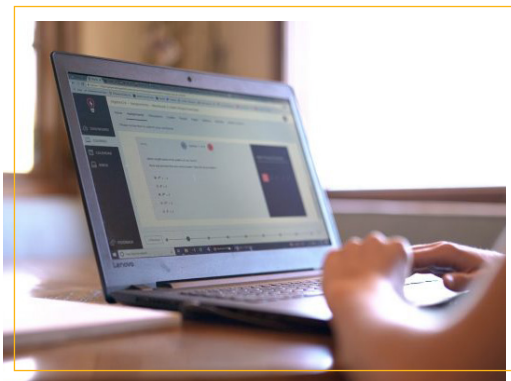
[STRONGMIND.COM](https://strongmind.com)

[f](#) [t](#) [v](#) [i](#) [#strongmindedu](#)

# ELEVATE. OPTIMIZE. THRIVE. TOGETHER.

## You have the vision; we have the building blocks.

A StrongMind partnership means building a solution that helps schools thrive and students succeed. Together, we foster crucial relationships throughout the learning journey – from students and parents, to teachers and administrators. StrongMind has a team dedicated to supporting schools and districts looking to improve or establish fully virtual learning solutions. Everything from high-quality digital curriculum to turn-key operations solutions, StrongMind delivers comprehensive strategies designed to tackle your school's specific challenges and enable student success.



## Together, we'll create the best digital learning solutions.

In order to fulfill our vision of becoming the most trusted and respected digital learning solutions company, StrongMind is dedicated to attracting and retaining the brightest minds in education and technology. We put our partners first and are committed to operating with respect, candor, and persistence.



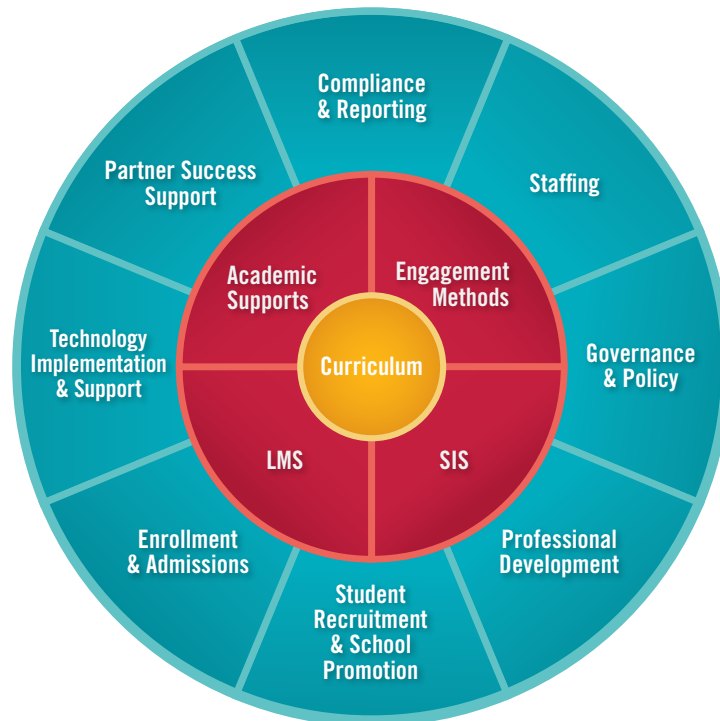
**A virtual school fully supported by StrongMind enables a personalized and engaging learning experience and a partnership that deliver results.**

StrongMind combines high quality, 100% online curriculum with engaging and relevant media, and data insights, so your virtual school can provide an individualized learning experience.



[hear from students](#) 

Our Virtual solution can be turn-key or customized around the following components:

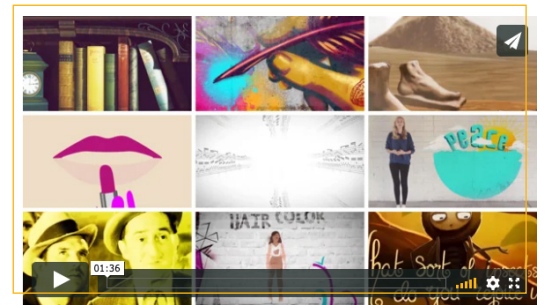


# STRONGMIND<sup>SM</sup> HIGH QUALITY & ENGAGING COURSES

StrongMind proudly offers high quality, standards-aligned digital curriculum with rigorous instructional content, engaging and relevant media, formative and summative assessment, and data insights that provide personalized learning experiences for students in grades 6-12. With many Quality Matters certified courses, our digital courses are developed by teams of pedagogy, curriculum, media, assessment, technology, and implementation experts, based on 20 years of experience of working with students in virtual, remote, and hybrid learning environments with the goal of preparing students for success in college, career, and life.

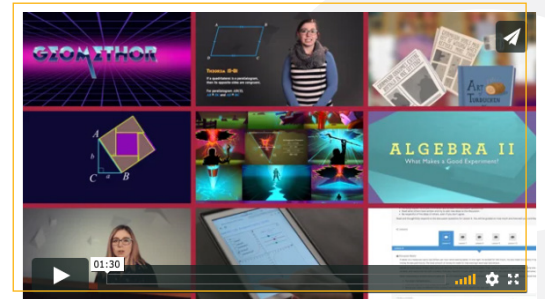
## English Language Arts

A combination of high-interest readings, standards-applicable activities, and real-world critical thinking skills, the Language Arts courses reflect careful consideration and research of literature and composition concepts. Projects, activities, and lessons are designed to be motivational, realistic, and engaging while fostering a love of literature and a can-do attitude for writing.



## Math

Our innovative math courses help students learn to problem-solve and build important skills. With videos, interactives, and other supports, students are engaged in learning and can master concepts in subject areas like algebra, geometry, and advanced math.



## Science

Our robust science courses explore various science topics, including biology, ecology, chemistry, physical science, and earth science. Courses focus on both the understanding and application of science topics and embed concepts for engineering and technology throughout. Virtual and hands-on projects help students further apply their knowledge during courses.



## Social Studies

StrongMind Social Studies courses focus on the study of the past and how it applies to the future. Throughout the courses, students develop their understanding of the past by studying primary sources, comparing social movements, and exploring ancient cultures.



## Electives

With StrongMind, students enjoy a variety of electives to choose from, many of which include career and technical education (CTE) components design to help them learn about and explore different CTE pathways. Whether students are learning about world cultures and languages, graphic design, or taking a physical education course, students will gain valuable skills.



---

## Strong Minded

SOCIAL EMOTIONAL LEARNING

StrongMINDED is a powerful, innovative, easy-to-implement SEL digital solution for leading students to develop social emotional learning competencies that support academic achievement and positive life skills. With curriculum for both middle and high school students, our innovative digital solution empowers schools and educators to help their students explore SEL skills like Understanding and Managing Emotions, Setting and Achieving Positive Goals, Making Responsible Decisions, Building Healthy Relationships, and many more.



# STRONGMIND<sup>SM</sup> 2020-2021 COURSE LIST

More information on elementary and other licensed courses available upon request

Year-long courses are delivered in a two-semester format.

ENGLISH LANGUAGE ARTS	⊙	GRADE	GENERAL	HONORS
English 6		6	✓	✓
English 7		7	✓	✓
English 8		8	✓	✓
English 9		9	✓	✓
English 10		10	✓	✓
English 11		11	✓	✓
English 12		12	✓	✓
Intensive Reading	⊙	6-8	✓	

MATHEMATICS	⊙	GRADE	GENERAL	HONORS
Math 6		6	✓	✓
Math 7		7	✓	✓
Math 8		8	✓	✓
Pre-Algebra	⊙	6-9	✓	
Algebra 1		9-12	✓	✓
Geometry		9-12	✓	✓
Algebra 2		9-12	✓	✓
Extended Algebra 2**		9-12	✓	
Financial Mathematics ∞	⊙	9-12	✓	
Applied Mathematics ∞	⊙	9-12	✓	
College Mathematics Preparation*		11-12	✓	

SCIENCE	⊙	GRADE	GENERAL	HONORS
Science 6		6	✓	
Science 7		7	✓	
Science 8		8	✓	
Physical Science		9-12	✓	
Biology		9-12	✓	✓
Chemistry		9-12	✓	✓
Environmental Science		9-12	✓	

SPANISH	⊙	GRADE	GENERAL	HONORS
Spanish for Young Learners: Grade 7		7	✓	
Spanish for Young Learners: Grade 8		8	✓	
Spanish 1		9-12	✓	
Spanish 2		9-12	✓	
Spanish 3		9-12	✓	

\* This course may receive college credit through dual enrollment if the school has a partnership with a college.

∞ Schools may use this course independently or pair to create a Math Models full-year course.

\*\* 4-semester course

⊙ Semester course

SOCIAL STUDIES	⊙	GRADE	GENERAL	HONORS
Social Studies 6		6	✓	
Social Studies 7		7	✓	
Social Studies 8		8	✓	
Civics		7-8	✓	
World Geography		9-12	✓	
World History		9-12	✓	✓
US History		9-12	✓	✓
US Government	⊙	9-12	✓	✓
Civics: Citizenship	⊙	9-12	✓	
Economics	⊙	9-12	✓	

ELECTIVES	⊙	GRADE	GENERAL	HONORS
Character Education	⊙	6-12	✓	
Gaming Unlocked	⊙	6-12	✓	
Adobe® Illustrator® Certification <i>Student must have access to Adobe Illustrator to successfully complete this course</i>	⊙	9-12	✓	
Adobe® InDesign® Certification <i>Student must have access to Adobe InDesign to successfully complete this course</i>	⊙	9-12	✓	
Adobe® Photoshop® Certification <i>Student must have access to Adobe Photoshop to successfully complete this course</i>	⊙	9-12	✓	
Art History: Modern	⊙	9-12	✓	
Art History: Origins	⊙	9-12	✓	
Criminology & Forensics	⊙	9-12	✓	
Criminology & Justice	⊙	9-12	✓	
Drones: Remote Pilot Certification	⊙	9-12	✓	
Entrepreneurship	⊙	9-12	✓	
Fashion Design		9-12	✓	
Graphic & Web Design	⊙	9-12	✓	
Interior Design		9-12	✓	
Photography Basics	⊙	6-12	✓	
Principles of Marketing	⊙	9-12	✓	
Professional Sales	⊙	9-12	✓	
Psychology		9-12	✓	
Public Speaking	⊙	9-12	✓	

HEALTH / PHYSICAL EDUCATION	⊙	GRADE	GENERAL	HONORS
Middle School Health	⊙	6-8	✓	
Middle School Physical Education	⊙	6-8	✓	
Health 101	⊙	9-12	✓	
Physical Education		9-12	✓	
Personal Fitness		9-12	✓	

Adobe® Illustrator®, Adobe® InDesign®, and Adobe® Photoshop® are either registered trademarks or trademarks of Adobe in the United States and/or other countries.

## StrongMind's Standards-Based Assessments for Hybrid and Virtual Courses

StrongMind's courses include assessments that are intentionally crafted to align to state academic standards. Using Backward Design, we break down each standard into learning objectives for both instruction and assessment purposes. The assessments, embedded at multiple points within the online course, are designed to assess the instruction of discrete learning objectives in multiple ways throughout the online course. Providing both low-stakes practice and high-stakes testing evaluation, the assessments facilitate learning, practice, critical thinking, and assess student proficiency of academic standards.

➤ **The assessments are technology enhanced, utilizing both teacher and system grading options. System scored assessments include workbook activities, checkpoints, unit exams, and final exams. Below is a description of each:**

- Workbook assignments – use targeted questions for practice and to assess students' mastery of an activity's objectives.
- Checkpoint assessments – designed to assess student mastery of lesson objectives are lower-stakes assessments that can help students and teachers identify gaps in knowledge that need to be filled before unit and final exams.
- Unit exams – assess mastery of unit objectives.
- Final exams – designed to assess mastery of standards and key outcomes for the course.

➤ **Teacher graded assessments include discussion board posts as well as writing and project activities.**

- Discussion board posts – give students the opportunity to critically evaluate and share thoughts and ideas about the topics covered in the lesson. They promote student engagement and interaction by prompting students with questions/topics that are open-ended.
- Writing and project activities – necessitate a greater level of thinking and reflection on course content. These assignments require students to apply their knowledge and writing capabilities to demonstrate mastery of the content presented in the lesson and across lessons. These assessments result in posters, infographics, presentations, essays, experiments, and other similar deliverables.

## Implementation

Our partnership begins with strong technical implementation and a deep understanding of your goals. We work closely with you to ensure that our products will help you meet and exceed your desired outcomes.

### WHAT YOU CAN EXPECT:

- Custom Implementation for All Products
- Kick-off Call & Goal Setting
- Initial Product Training

## Ongoing Support

We are always here for you. Our partnership includes a dedicated Partner Success Manager who meets with you regularly to discuss your experience as well as provide guidance and training along the way.

### WHAT YOU CAN EXPECT:

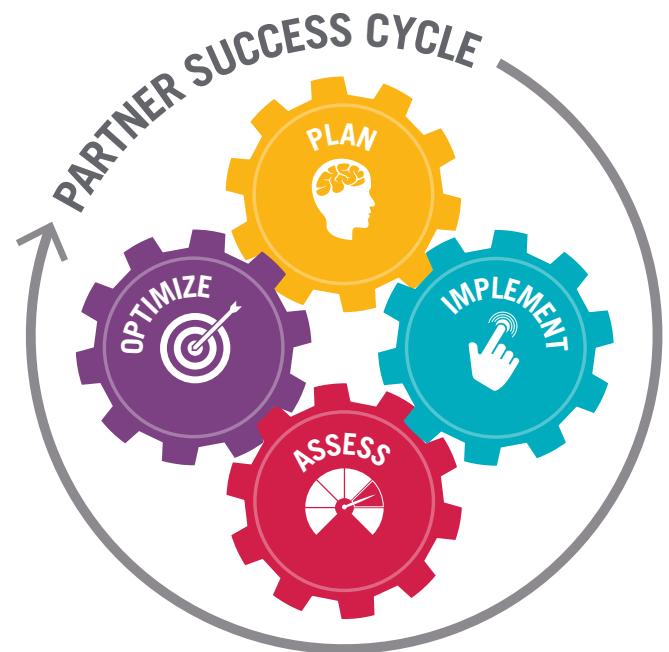
- Partnership Reviews and Progress Monitoring
- Ongoing Training and Support as Needed
- Unlimited Access to the Online Ticketing System

## Resources

We know strong teaching and learning is happening all the time, and you should be able to access support easily whenever you need it. StrongMind has a robust Help Center for students and teachers. StrongMind Community coming soon.

### WHAT YOU CAN EXPECT:

- Unlimited Access to the Online Help Center for Teachers and Students
- Access to the StrongMind Community



### Services Available For An Additional Fee:

- Integrations
- Insight Reports
  - Student efficacy
  - Quantitative and qualitative feedback
- Custom Reports





In addition to robust, ongoing implementation and technology support through Partner Success, StrongMind also offers an extensive list of managed Education Services.

## Services are developed and customized to meet the specific and local needs of our partners:

- Marketing, Student Recruitment and Enrollment, and Public Relations
- Governance, Policy, Compliance, and Accountability
- Human Resources, Support Staff, Teaching and Administrative Staff
- Teaching and Learning Professional Development
- Student Services
- Technology Planning, Implementation, and Support

