



 **STRONGMIND**SM

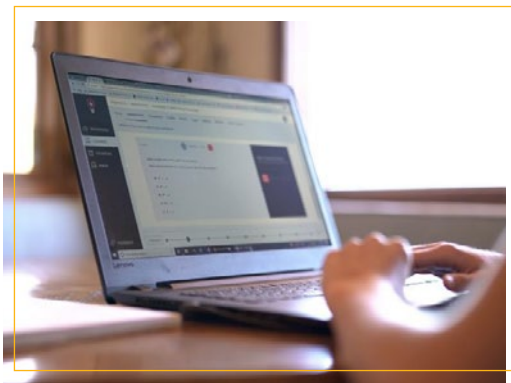
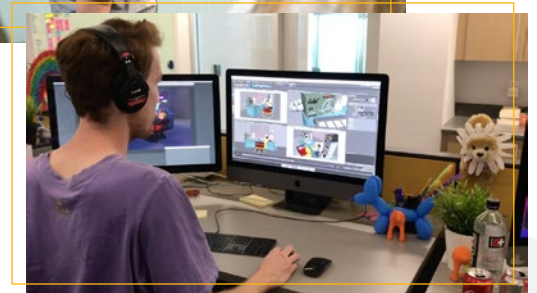
[STRONGMIND.COM](https://strongmind.com)

[f](#) [t](#) [v](#) [i](#) [#strongmindedu](#)

ELEVATE. OPTIMIZE. THRIVE. TOGETHER.

You have the vision; we have the building blocks.

A StrongMind partnership means building a solution that helps schools thrive and students succeed. Together, we foster crucial relationships throughout the learning journey – from students and parents, to teachers and administrators. StrongMind has a team dedicated to supporting schools and districts looking to improve or establish fully virtual or hybrid learning solutions. Everything from high-quality digital curriculum to turn-key operations solutions, StrongMind delivers comprehensive strategies designed to tackle your school's specific challenges and enable student success.

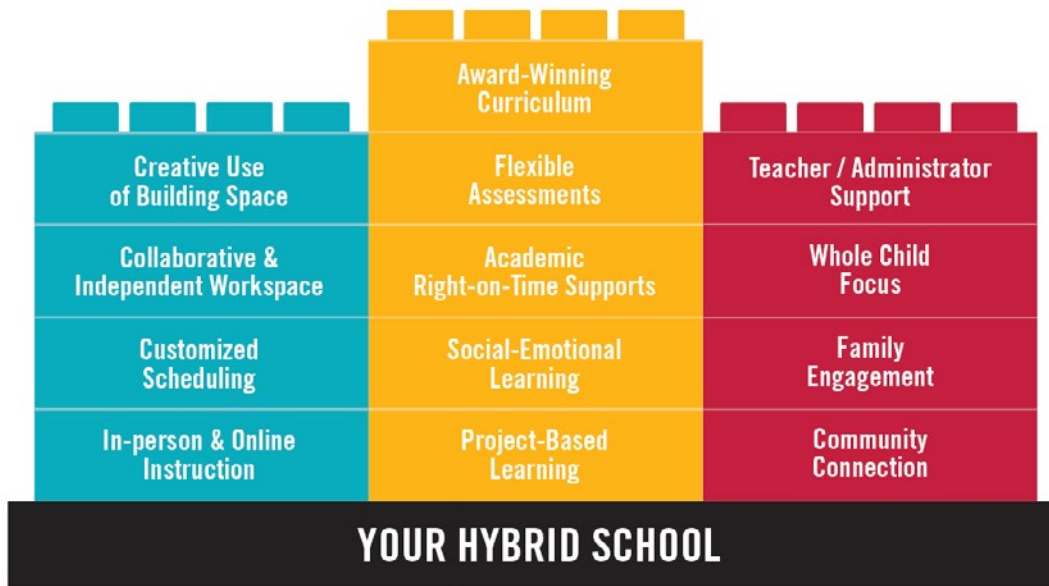


Together, we'll create the best digital learning solutions.

In order to fulfill our vision of becoming the most trusted and respected digital learning solutions company, StrongMind is dedicated to attracting and retaining the brightest minds in education and technology. We put our partners first and are committed to operating with respect, candor, and persistence.

STRONGMINDSM HYBRID SOLUTION

Hybrid learning can be organized in many different ways and is **flexible for the evolving needs of students and educators**. We work closely with partners to develop solutions that work for their teachers and students.



TIME & PLACE

Creative use of building space and instructional schedules frees students of time and space constraints. Enables schools to engage with more students more deeply.



CURRICULUM, INSTRUCTION & ASSESSMENT

Award-winning, standards-aligned curriculum with flexible assessments, right on time academic supports that address remediation and acceleration, embedded social-emotional learning activities, and project-based learning that enables engagement and collaboration.



PEOPLE

Focus on the whole child, support teachers and administrators, engage with families, fulfill needs within the community.

STRONGMINDSM HYBRID CURRICULUM

A Flexible, Future-Proof Solution

- Hybrid learning where students split time learning at school and at home
- School-based blended learning where students divide time among teacher-led activities, collaborating with other students, and self-paced learning
- Other innovative models in the hybrid and blended learning spectrum



[watch video](#) 

A Solution that Optimizes Time, Place, People, Curriculum, Instruction, and Assessment to Drive Learning Outcomes

- Accommodates flexible schedules and learning spaces
- Award-winning, Quality Matters certified, and standards-aligned curriculum in math, ELA, social studies, and science for grades 6-12
- A blend of self-paced learning, teacher-led/directed activities, embedded project-based learning, and formative/summative assessment
- Extensive teacher resources, including detailed pacing guides and activity-specific resources for every activity
- Digital delivery in a platform designed to support innovative models for learning
- Support and wrap-around services to promote success



Fully scoped and sequenced content
with a path to success for every student:

ENGLISH LANGUAGE ARTS	MATHEMATICS	SOCIAL STUDIES	SCIENCE
English 6	Math 6	Social Studies 6	Science 6
English 7	Math 7	Social Studies 7	Science 7
English 8	Math 8	Social Studies 8	Science 8
English 9	Algebra I	US History	Physical Science
English 10	Geometry	World History	Biology
English 11	Algebra II	US Government	Chemistry
English 12		Economics	

Focus on the Whole Learner— StrongMINDED Social Emotional Learning

- Digital delivery for whenever, wherever, and however students are learning
- Designed in small 5-minute activities that can be presented as stand-alone personalized learning or embedded into courses for large groups
- Aligned to the CASEL* competencies with 300 searchable activities
- Includes real world scenarios, interactives, and rich media
- Accessible to provide equity for all learners

SEL content available for grades 6-12



* The Collaborative for Academic, Social, and Emotional Learning

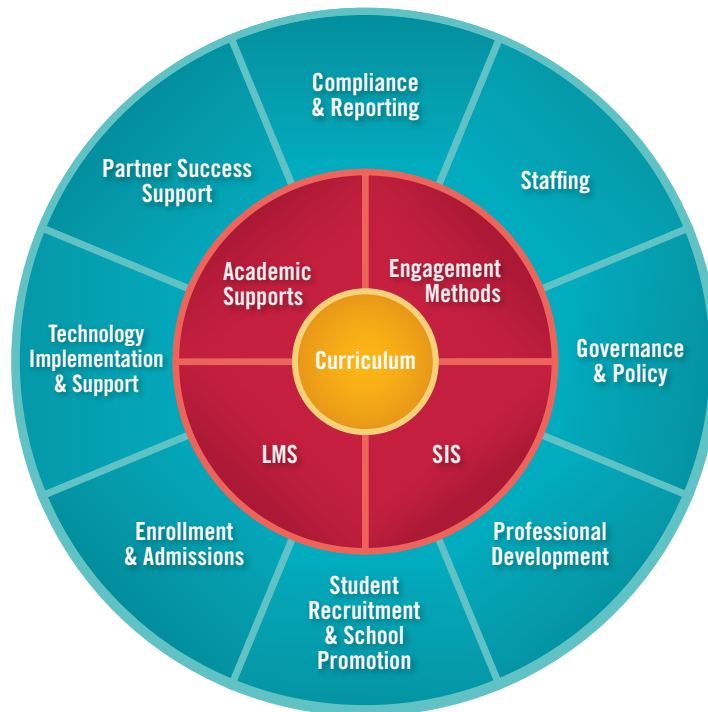
A virtual school fully supported by StrongMind enables a personalized and engaging learning experience and a partnership that deliver results.

StrongMind combines high quality, 100% online curriculum with engaging and relevant media, and data insights, so your virtual school can provide an individualized learning experience.



[hear from students](#) 

Our Virtual solution can be turn-key or customized around the following components:

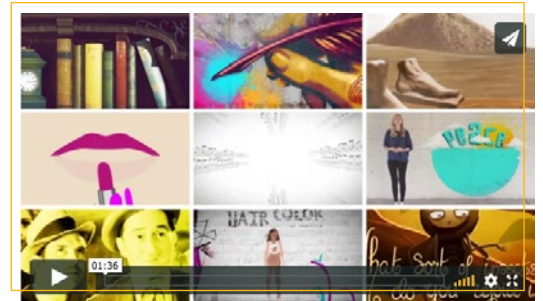


STRONGMINDSM HIGH QUALITY & ENGAGING COURSES

StrongMind proudly offers robust, high-quality courses for grades 6-12. Students enjoy captivating lessons for math, English language arts, science, social studies, and a variety of electives.

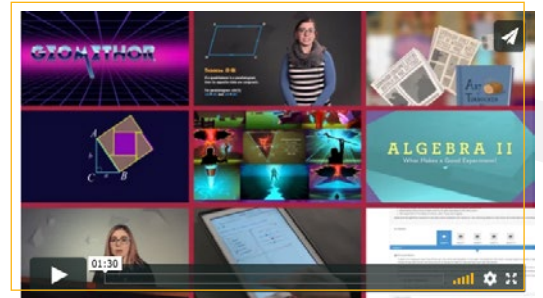
English Language Arts

A combination of high-interest readings, standards-applicable activities, and real-world critical thinking skills, the Language Arts courses reflect careful consideration and research of literature and composition concepts. Projects, activities, and lessons are designed to be motivational, realistic, and engaging while fostering a love of literature and a can-do attitude for writing.



Math

Our innovative math courses help students learn to problem-solve and build important skills. With videos, interactives, and other supports, students are engaged in learning and can master concepts in subject areas like algebra, geometry, and advanced math.



Science

Our robust science courses explore various science topics, including biology, ecology, chemistry, physical science, and earth science. Courses focus on both the understanding and application of science topics and embed concepts for engineering and technology throughout. Virtual and hands-on projects help students further apply their knowledge during courses.



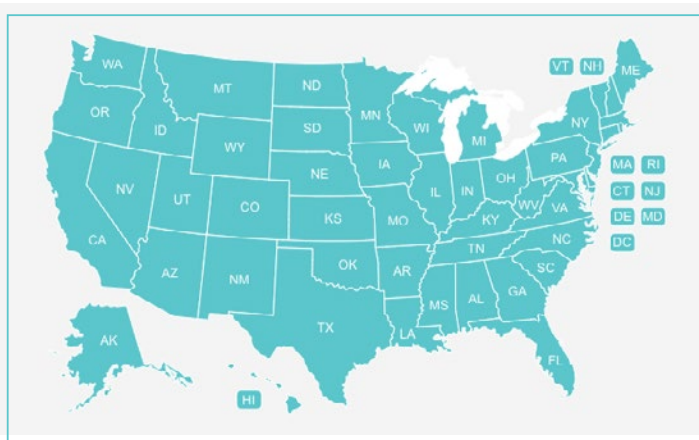
Social Studies

StrongMind Social Studies courses focus on the study of the past and how it applies to the future. Throughout the courses, students develop their understanding of the past by studying primary sources, comparing social movements, and exploring ancient cultures.



Electives

With StrongMind, students enjoy a variety of electives to choose from, many of which include career and technical education (CTE) components design to help them learn about and explore different CTE pathways. Whether students are learning about world cultures and languages, graphic design, or taking a physical education course, students will gain valuable skills.



[Check out the courses in your state >](#)

Courses for students in grades K-5 are also available.
[Contact us](#) for more information.

StrongMind's Standards-Based Assessments for Hybrid and Virtual Courses

StrongMind's courses include assessments that are intentionally crafted to align to state academic standards. Using Backward Design, we break down each standard into learning objectives for both instruction and assessment purposes. The assessments, embedded at multiple points within the online course, are designed to assess the instruction of discrete learning objectives in multiple ways throughout the online course. Providing both low-stakes practice and high-stakes testing evaluation, the assessments facilitate learning, practice, critical thinking, and assess student proficiency of academic standards.

➤ **The assessments are technology enhanced, utilizing both teacher and system grading options. System scored assessments include workbook activities, checkpoints, unit exams, and final exams. Below is a description of each:**

- Workbook assignments – use targeted questions for practice and to assess students' mastery of an activity's objectives.
- Checkpoint assessments – designed to assess student mastery of lesson objectives are lower-stakes assessments that can help students and teachers identify gaps in knowledge that need to be filled before unit and final exams.
- Unit exams – assess mastery of unit objectives.
- Final exams – designed to assess mastery of standards and key outcomes for the course.

➤ **Teacher graded assessments include discussion board posts as well as writing and project activities.**

- Discussion board posts – give students the opportunity to critically evaluate and share thoughts and ideas about the topics covered in the lesson. They promote student engagement and interaction by prompting students with questions/topics that are open-ended.
- Writing and project activities – necessitate a greater level of thinking and reflection on course content. These assignments require students to apply their knowledge and writing capabilities to demonstrate mastery of the content presented in the lesson and across lessons. These assessments result in posters, infographics, presentations, essays, experiments, and other similar deliverables.

Implementation

Our partnership begins with strong technical implementation and a deep understanding of your goals. We work closely with you to ensure that our products will help you meet and exceed your desired outcomes.

WHAT YOU CAN EXPECT:

- Custom Implementation for All Products
- Kick-off Call & Goal Setting
- Initial Product Training

Ongoing Support

We are always here for you. Our partnership includes a dedicated Partner Success Manager who meets with you regularly to discuss your experience as well as provide guidance and training along the way.

WHAT YOU CAN EXPECT:

- Partnership Reviews and Progress Monitoring
- Ongoing Training and Support as Needed
- Unlimited Access to the Online Ticketing System

Resources

We know strong teaching and learning is happening all the time, and you should be able to access support easily whenever you need it. StrongMind has a robust Help Center for students and teachers. StrongMind Community coming soon.

WHAT YOU CAN EXPECT:

- Unlimited Access to the Online Help Center for Teachers and Students
- Access to the StrongMind Community



Services Available For An Additional Fee:

- Integrations
- Insight Reports
 - Student efficacy
 - Quantitative and qualitative feedback
- Custom Reports



In addition to robust, ongoing implementation and technology support through Partner Success, StrongMind also offers an extensive list of managed Education Services.

Services are developed and customized to meet the specific and local needs of our partners:

- Marketing, Student Recruitment and Enrollment, and Public Relations
- Governance, Policy, Compliance, and Accountability
- Human Resources, Support Staff, Teaching and Administrative Staff
- Teaching and Learning Professional Development
- Student Services
- Technology Planning, Implementation, and Support

